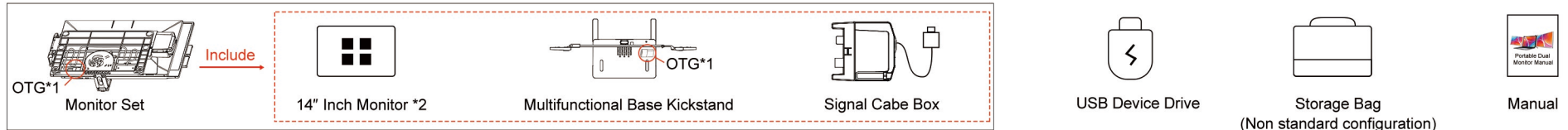
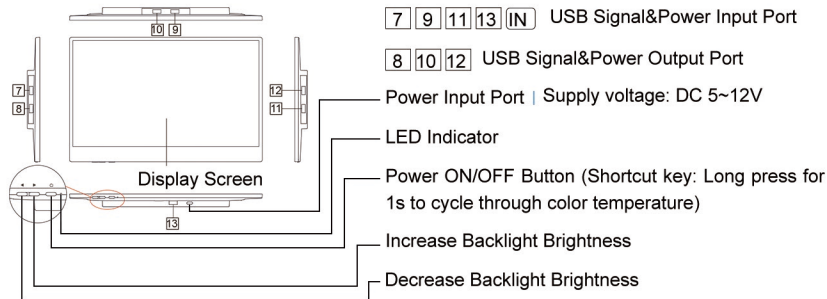


Portable Dual Monitor Manual

Packing List

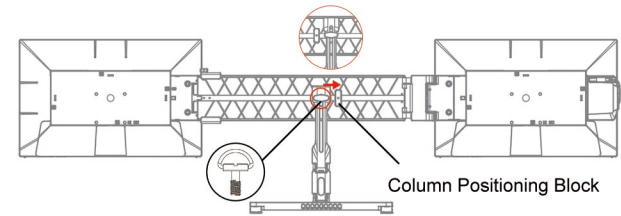


Port Instructions



- Note:**
- The four USB input ports are connected in parallel, and any one can be used.
 - For additional power, Connect any input port of the monitor using a signal cable box.

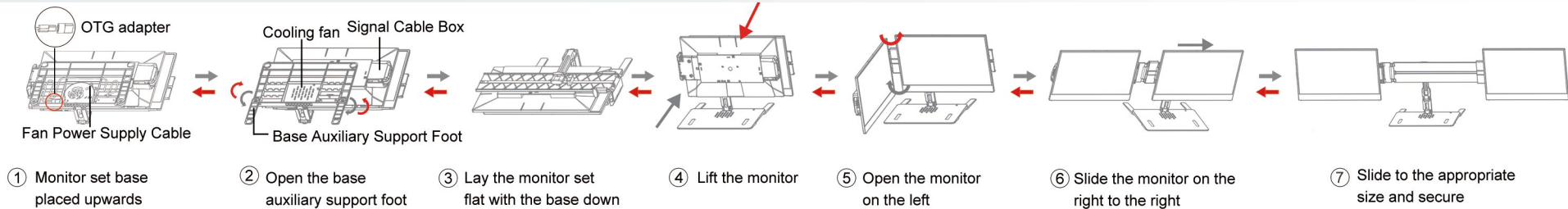
Adapt to Laptop Size Adjustment



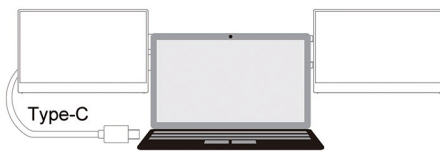
The positioning block is factory set for laptops 13.6 inches and below

For laptops 13.6 inches and above, unscrew the screws on the back of the base, move the horizontal plate to another positioning block, and tighten the screws.

Display Unfolding/Storage Instructions



Explanation of Signal Connection



- Note:**
- If the laptop only has a USB A port, use the OTG (USB C female to USB A male) adapter from the accessories.
 - After connecting the signal, if the monitor screen flickers or only one screen lights up, provide power to the monitor.

◆ Drive operation:

Windows System:

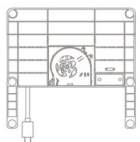
If the system is Win 7 or later, please turn on the system's automatic update settings first. Then insert the USB signal cable of the connected monitor, and the Windows system will automatically detect the inserted USB signal and install the driver. After installing the driver, please restart the computer to use it. If the system cannot automatically install the driver after you check the USB signal, please install it manually. (Insert the included USB drive, select the corresponding driver, double-click to open, and follow the prompts to complete the operation)

Mac System:

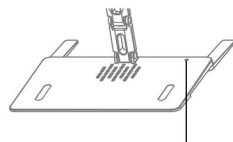
If it is an Apple computer, please download the "USB driver" from the Apple Store or manually install the driver from the included USB drive. Please refer to the attachment for the USB drive content. Contact customer service to download the corresponding driver. Please refer to the attachment for the USB drive content. Or contact customer service to download the corresponding driver.

Note: The monitor only supports Apple computers and does not support Apple phones and iPads.

Cooling fan Use Instructions

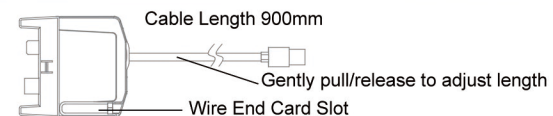


Remove the Type-C power cable for the cooling fan from the bottom of the stand and connect it to the computer to use.



After power is supplied, press repeatedly to cycle through: On (green light) → Level 1 → Level 2 → Level 3 → Off (red light).

USB Cable Box Use Instructions



- Take down the plug from the card slot, pull out the cable, insert it into the input port of the signal source (laptop/computer), and adjust the appropriate length by pulling/loosening the cable.
- Folding method: Pull out the signal cable, insert the plug into the slot of the cable box, and then pull and loosen the cable again. The cable will automatically be collected into the cable box.

Display Screen Adjustment

The monitor features the multi-directional splicing method. Users can adjust the display screen of each sub-monitor through the following methods to achieve the optimal display effect.



Windows System:
 Right-click the mouse to enter the system's "Display settings" options. Under the "Display" option, you can adjust the arrangement of multiple screens and the relationship between screens (Duplicate or Extend). Find the "Display orientation" option to adjust the display mode of the current monitor (Landscape, Portrait, or flipped display).

Mac System:
 Due to the Mac system not supporting screen rotation to expand the screen, this multi-screen display system can only rely on drivers to support screen rotation.

Monitor Angle and Height Adjustment

Adjustment slider of the right monitor (can only be adjusted on a single side)

① Left and right viewing angles adjustment of the monitor

② Adjustment of distance between left and right monitors

③ Adjustment of forward and backward tilt angle

④ Monitor Height Adjustment

Loosen the screws

Adapt to the Left and Right Ports of the Laptop Adjustment

Pull out the monitor

Press the buckle raised dots

① Press the buckle on the bracket and pull out the two monitors

Adjusted state

② Unscrew the screws on the back of the base, remove the horizontal plate, rotate it 180°, and then tighten the screws again

Signal Cable Box

Please insert the signal cable box or input signal into the monitor connected to this end

③ Reconnect the monitor

Supported Operating Systems

System	Version	Hardware Requirements
Win 7	SP1, Update kb4474419	Minimum CPU configuration: Intel 6th generation Core processor (The driver program has stopped updating)
Win 10	V1607	Minimum CPU configuration: Intel 6th generation Core processor
Win 11	21H2	Minimum CPU configuration: Intel 6th generation Core processor
Mac OS	10.15 Catalina 11 Big Sur 12 Monterey 13 Ventura	1. Minimum CPU configuration: Intel 8th generation Core processor 2. CPU: Apple M1 3. CPU: Apple M2
Android	Android 5.0 or above	

Product Specifications

Specification/Model	GS140NB	Screen Size	14.0"	Resolution	1920×1080(RGB)
Color Gamut	72%	Input Power	DC 5~12V	Rated Power *2	< 12W
Port	USB 2.0 IN x 4、USB 2.0 OUT x 3、DC IN x 1				